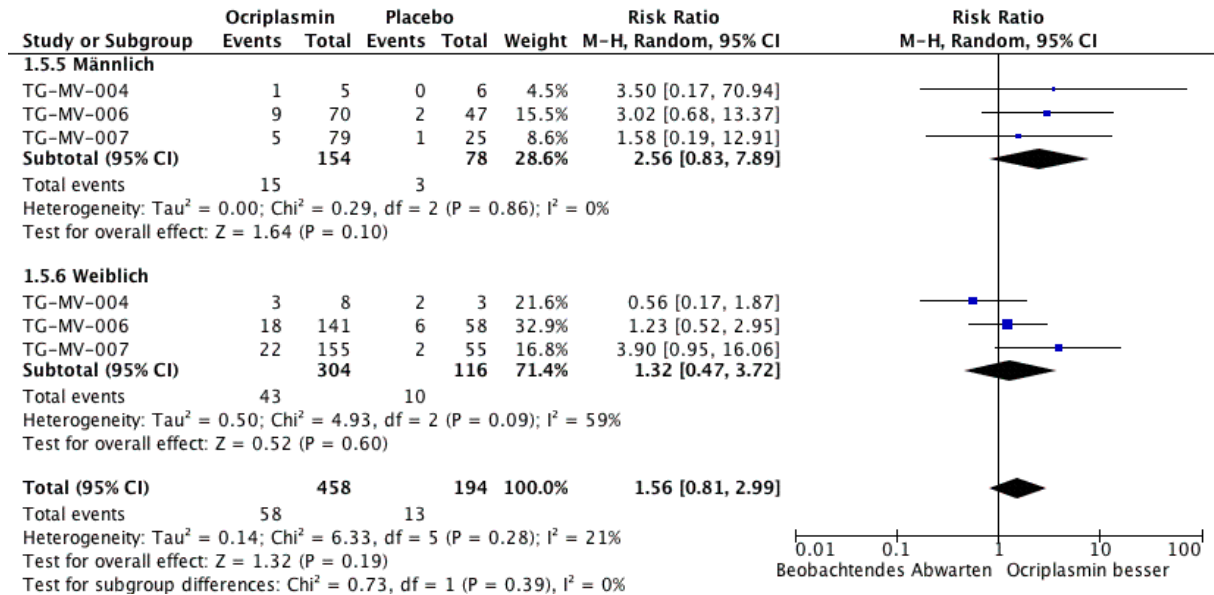


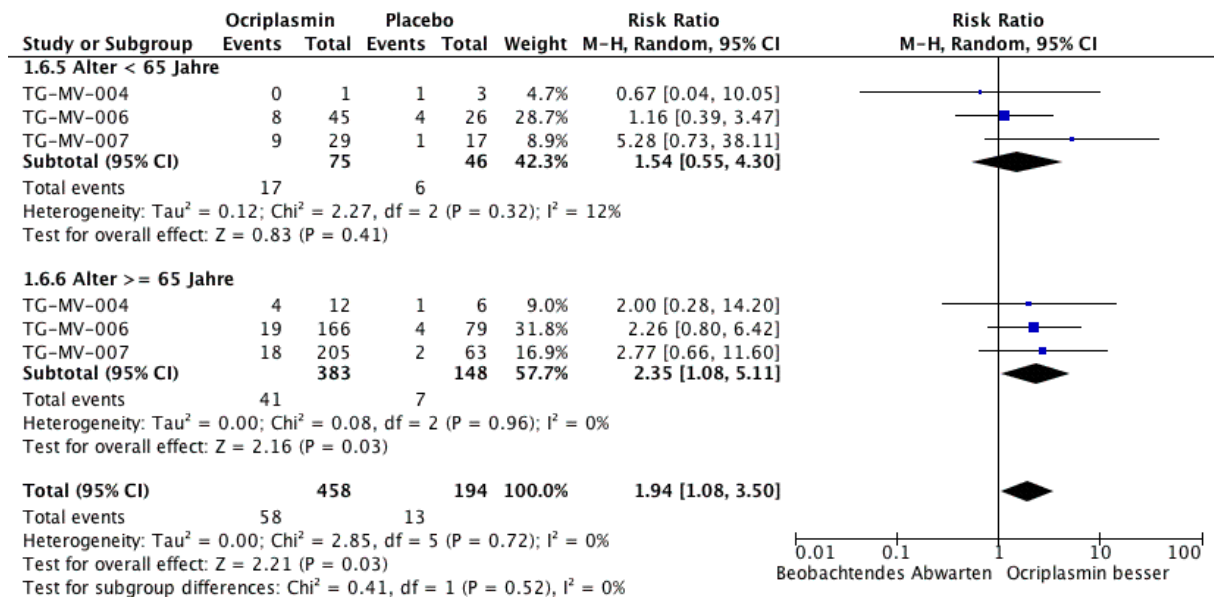
Anhang: Ergänzende Darstellung der Subgruppen nach Alter, Geschlecht (Zulassungspopulation)

Werte nach 6 Monaten, sofern nicht anders angegeben

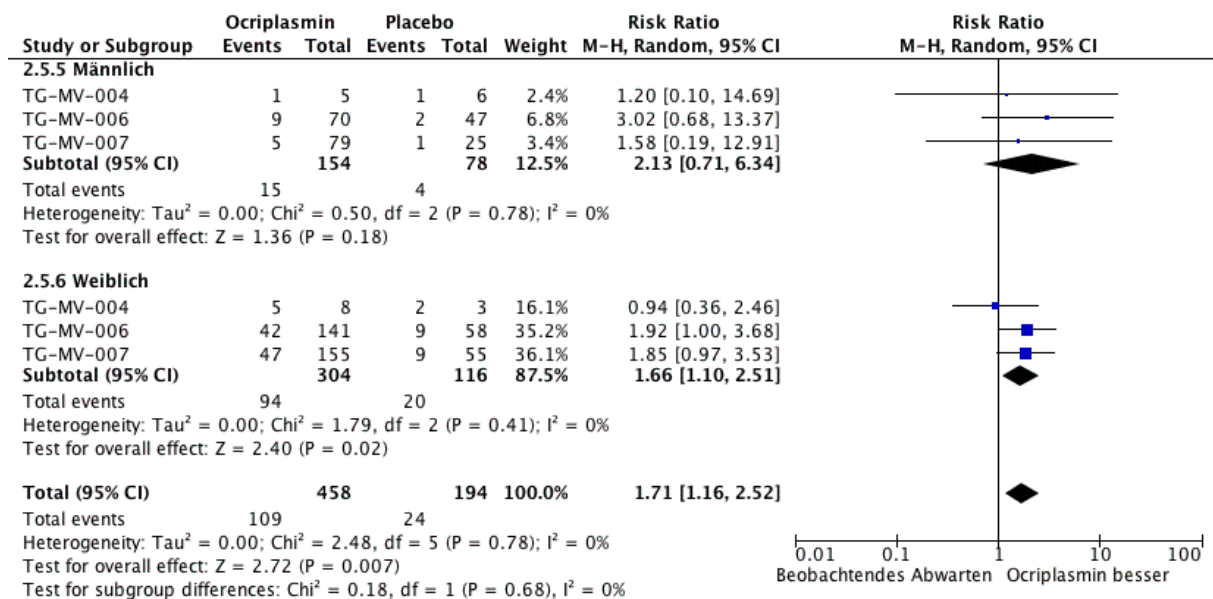
1.1 Sehschärfe Gewinn 15 Buchstaben Geschlecht



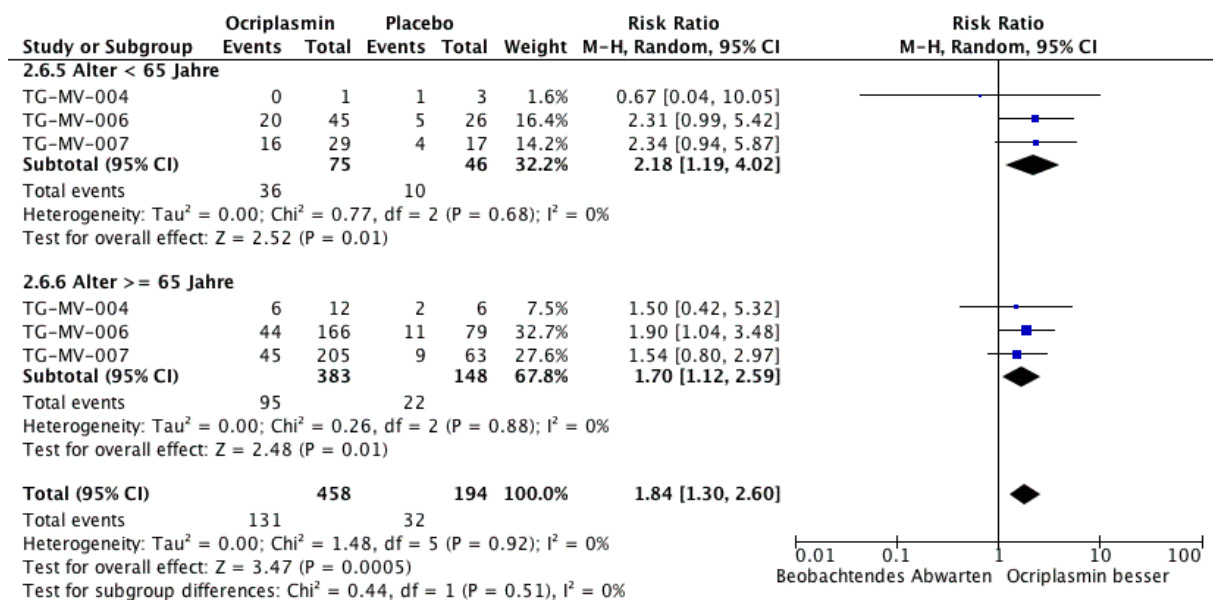
1.2 Sehschärfe Gewinn 15 Buchstaben Alter



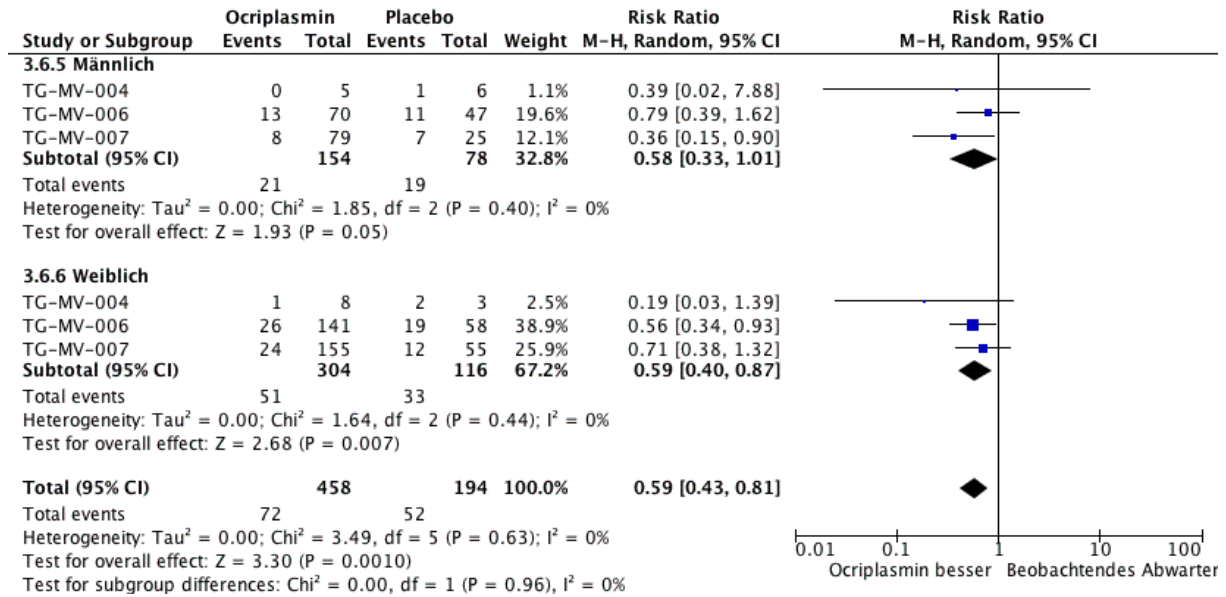
2.1 Sehschärfe Gewinn 10 Buchstaben Geschlecht



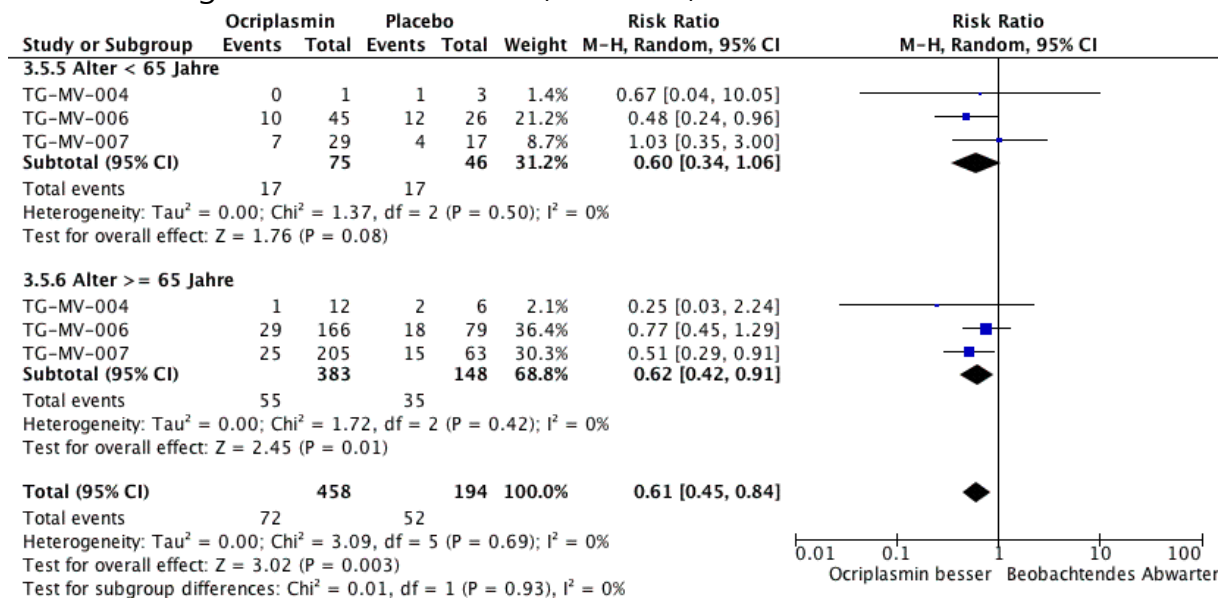
2.2 Sehschärfe Gewinn 10 Buchstaben Alter



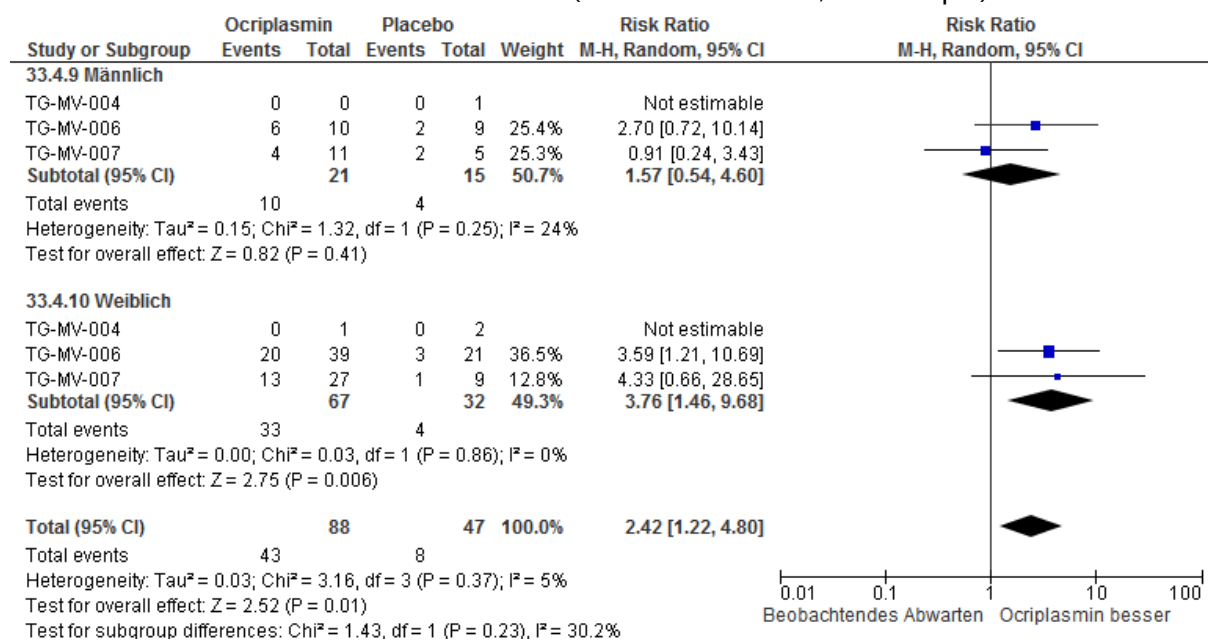
3.1 Notwendigkeit Vitrektomie Geschlecht (6 Monate)



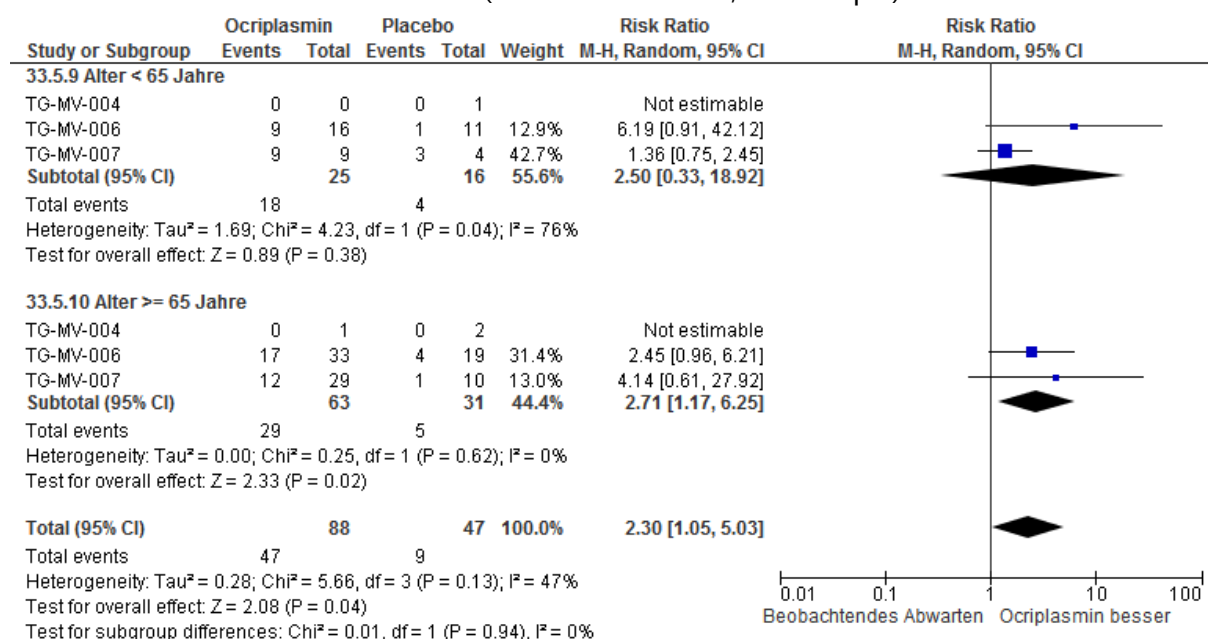
3.2 Notwendigkeit Vitrektomie Alter (6 Monate)



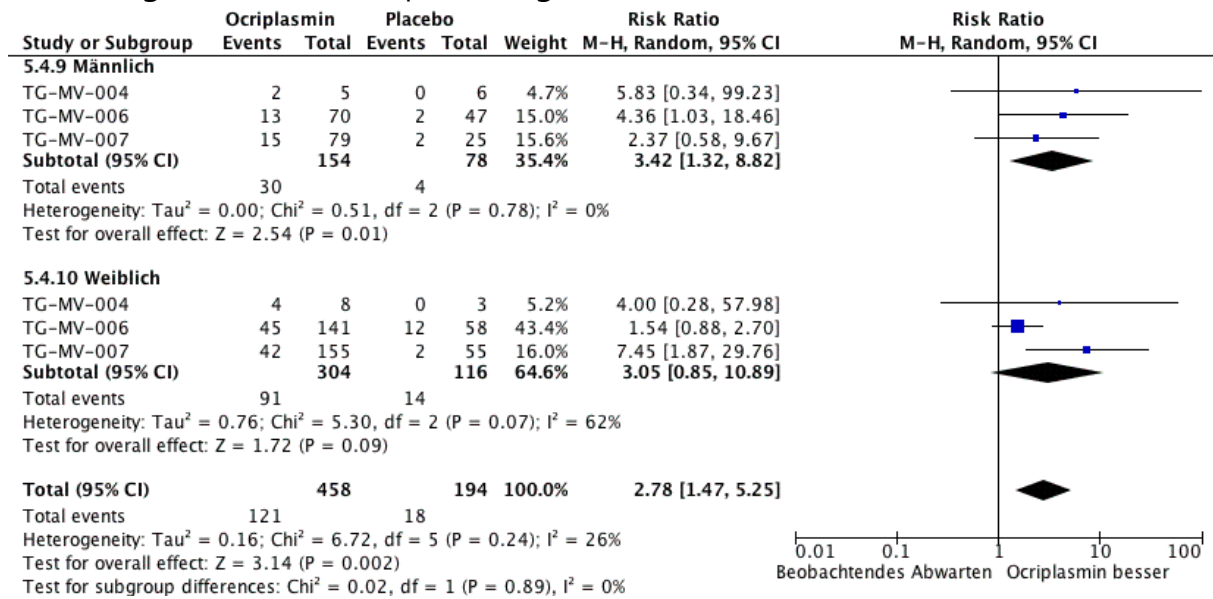
4.1 Verschluss Makulaloch Geschlecht (nach 6 Monaten, ohne PpV)



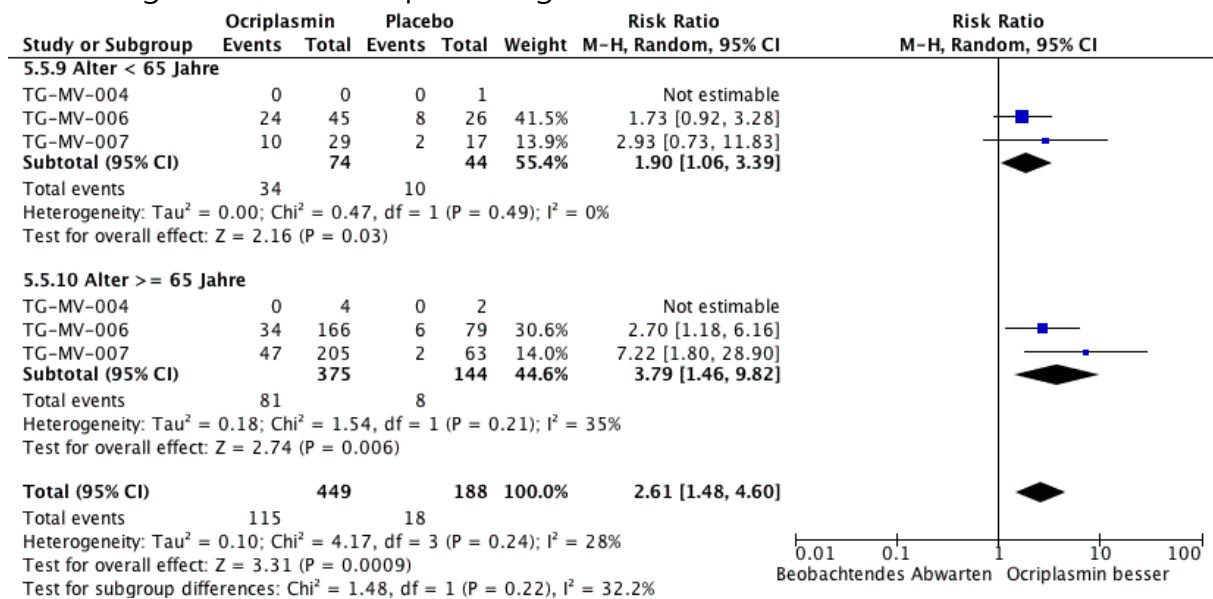
4.2 Verschluss Makulaloch Alter (nach 6 Monaten, ohne PpV)



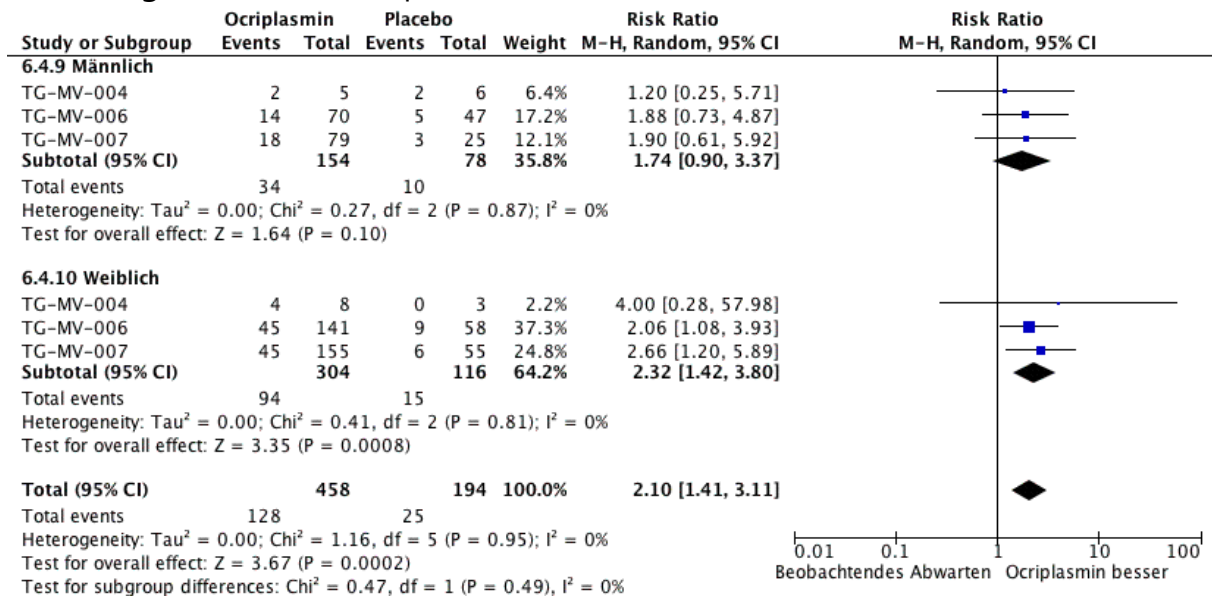
5.1 Lösung Traktion ohne PpV 28 Tage Geschlecht



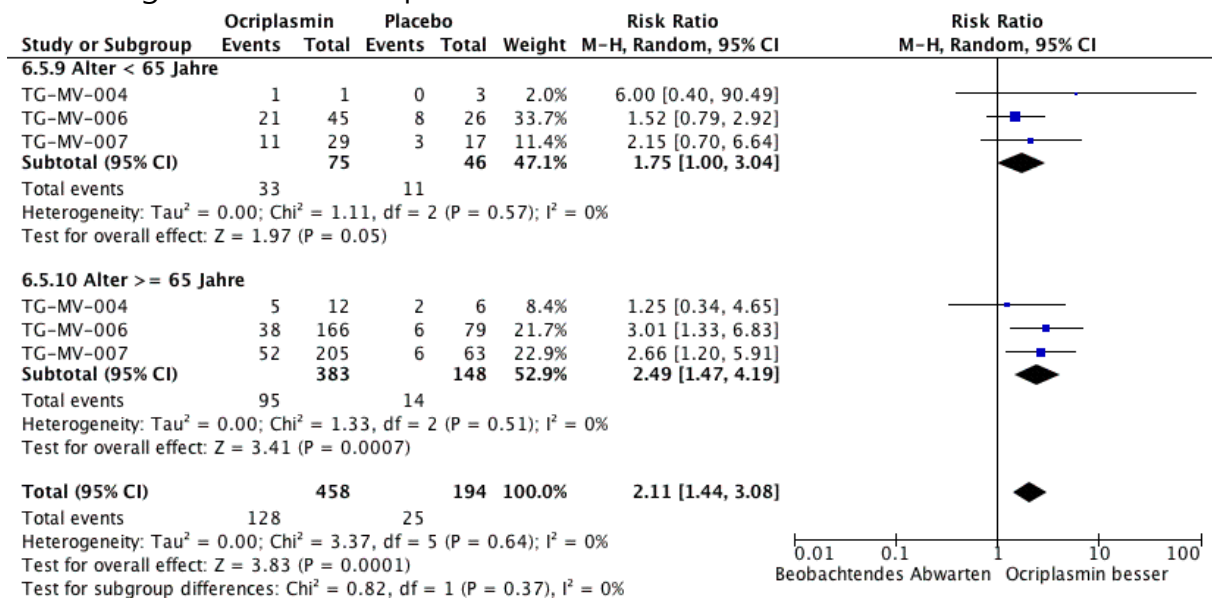
5.2 Lösung Traktion ohne PpV 28 Tage Alter



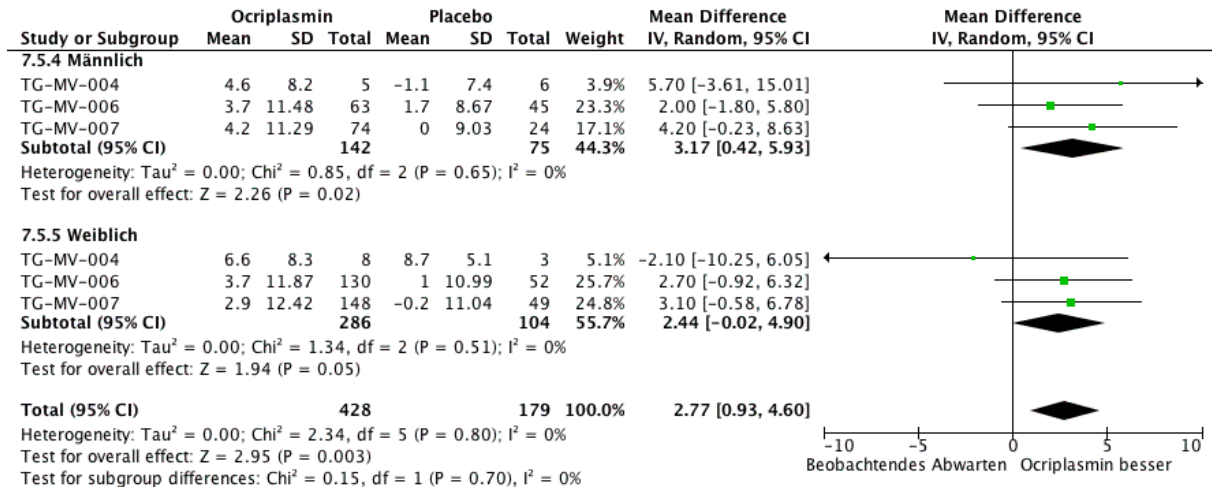
6.1 Lösung Traktion ohne PpV 6 Monate Geschlecht



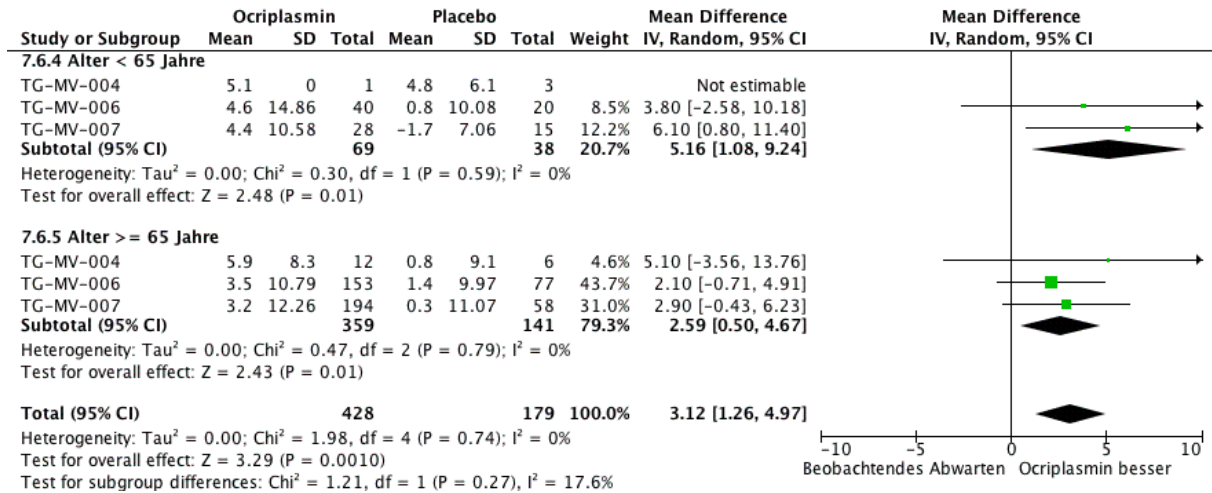
6.2 Lösung Traktion ohne PpV 6 Monate Alter



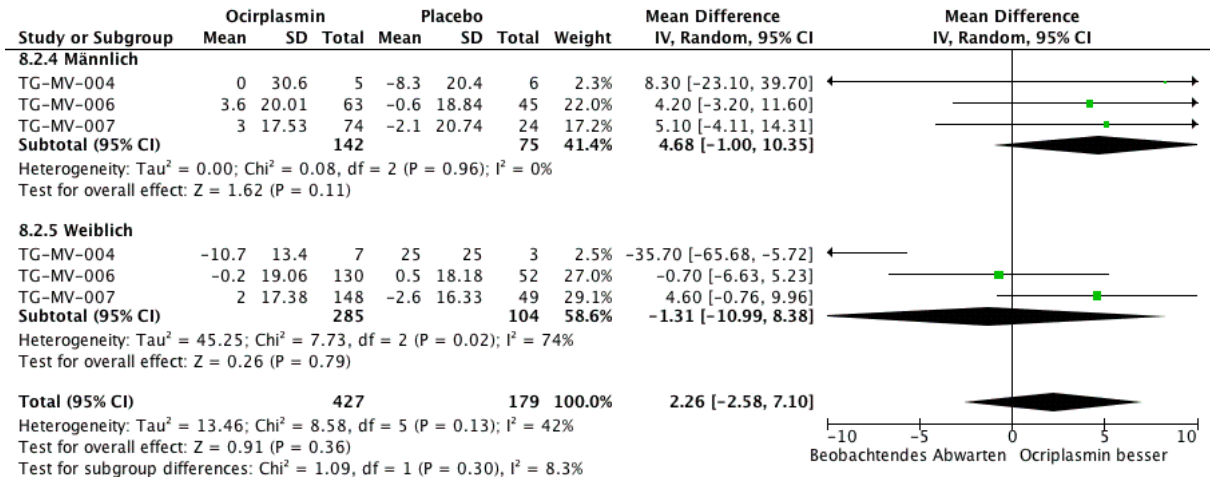
7.1 NEI VFQ Composite Score Geschlecht



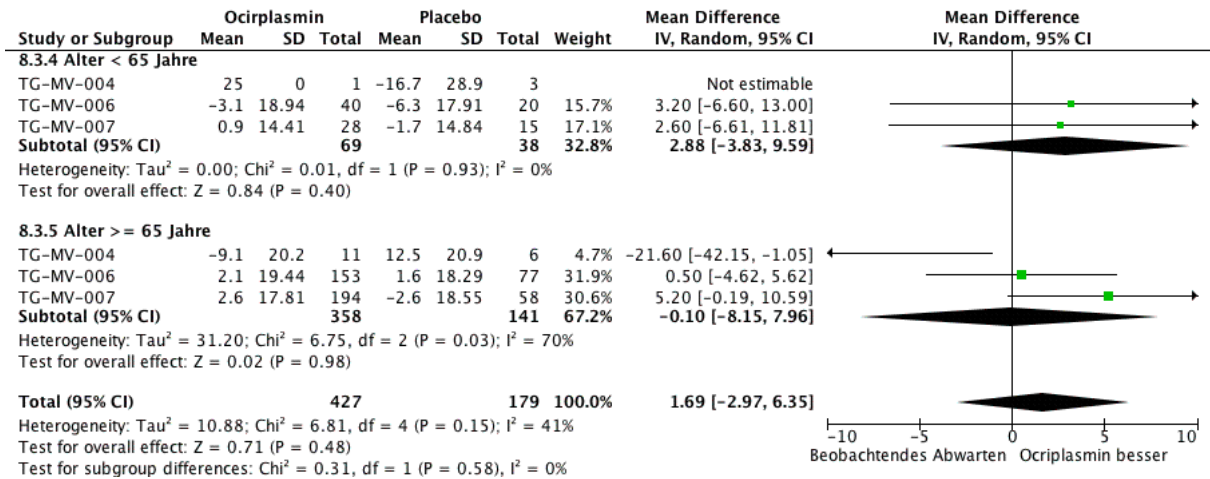
7.2 NEI VFQ Composite Score Alter



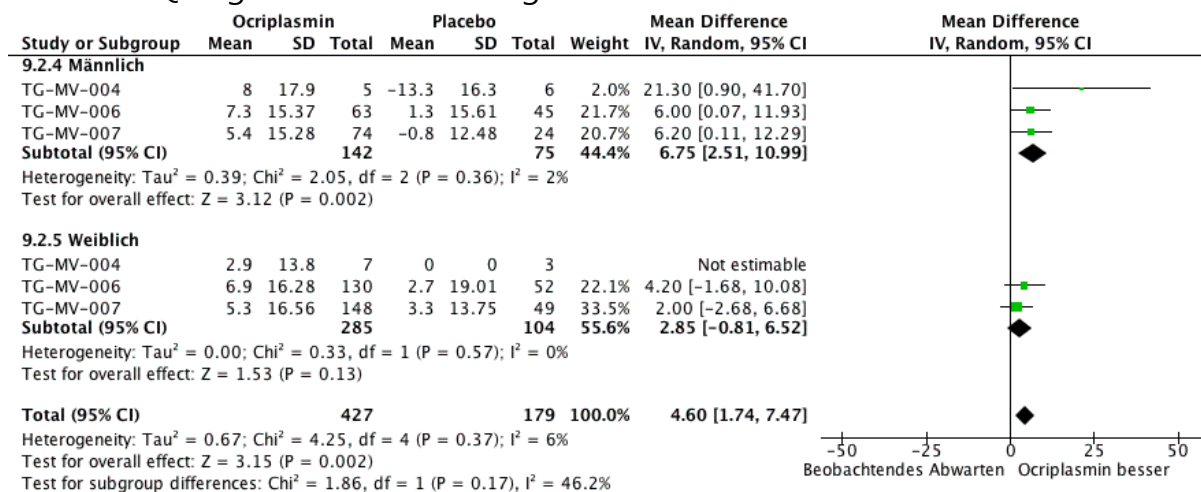
8.1 NEI VFQ Allgemeine Gesundheit Geschlecht



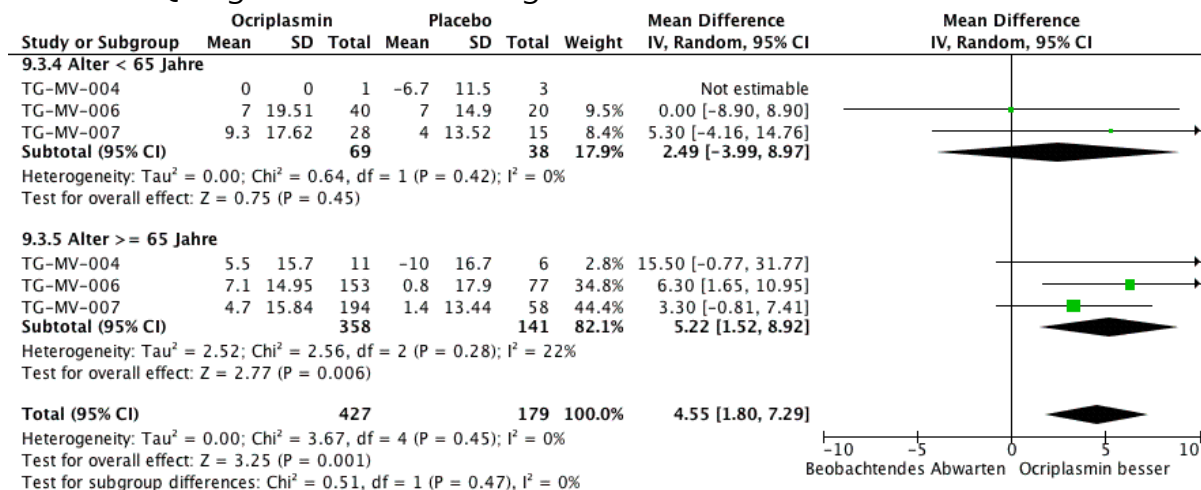
8.2 NEI VFQ Allgemeine Gesundheit Alter



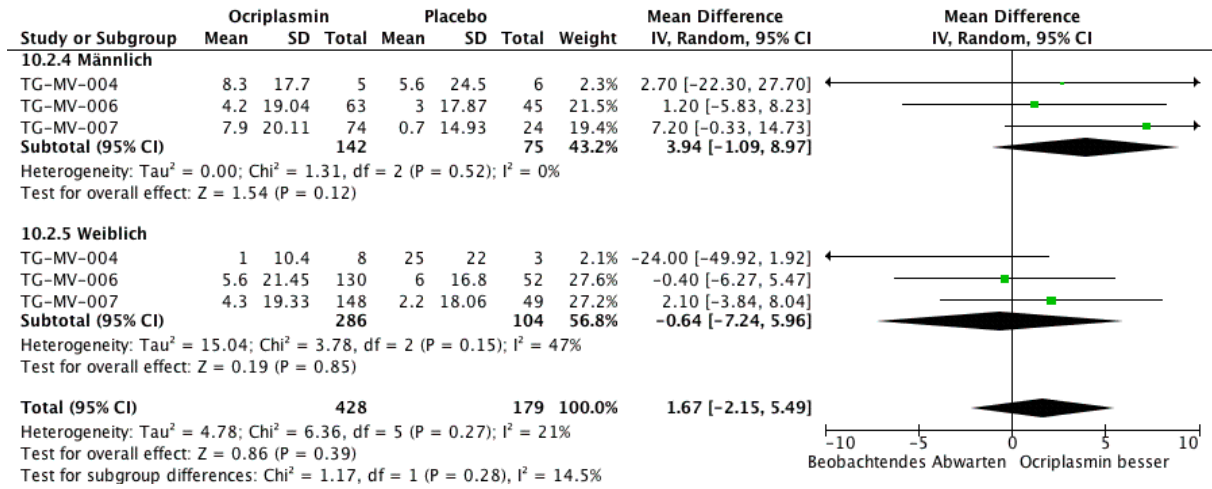
9.1 NEI VFQ Allgemeines Sehvermögen Geschlecht



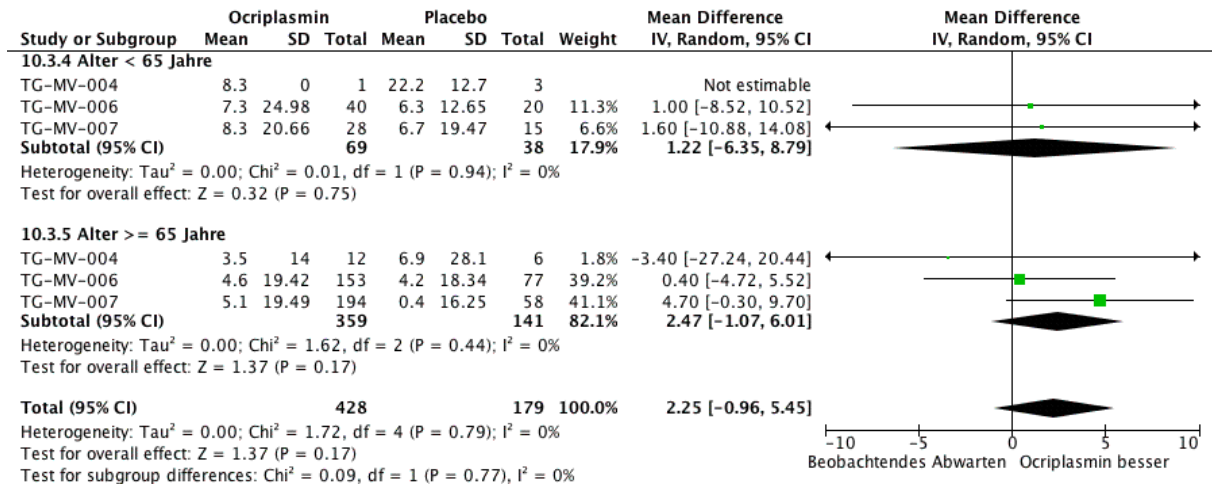
9.2 NEI VFQ Allgemeines Sehvermögen Alter



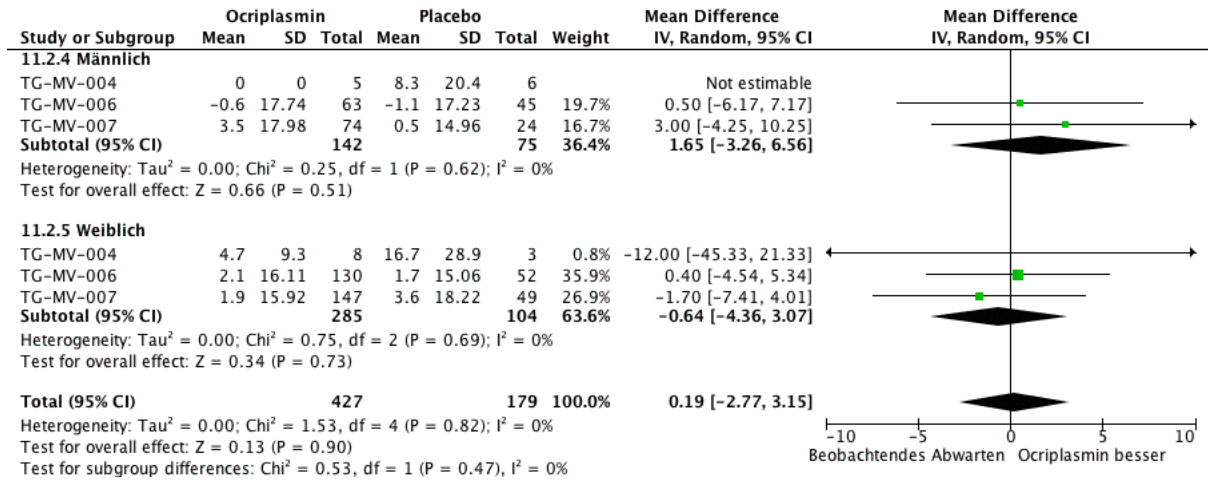
10.1 NEI VFQ Nahaktivitäten Geschlecht



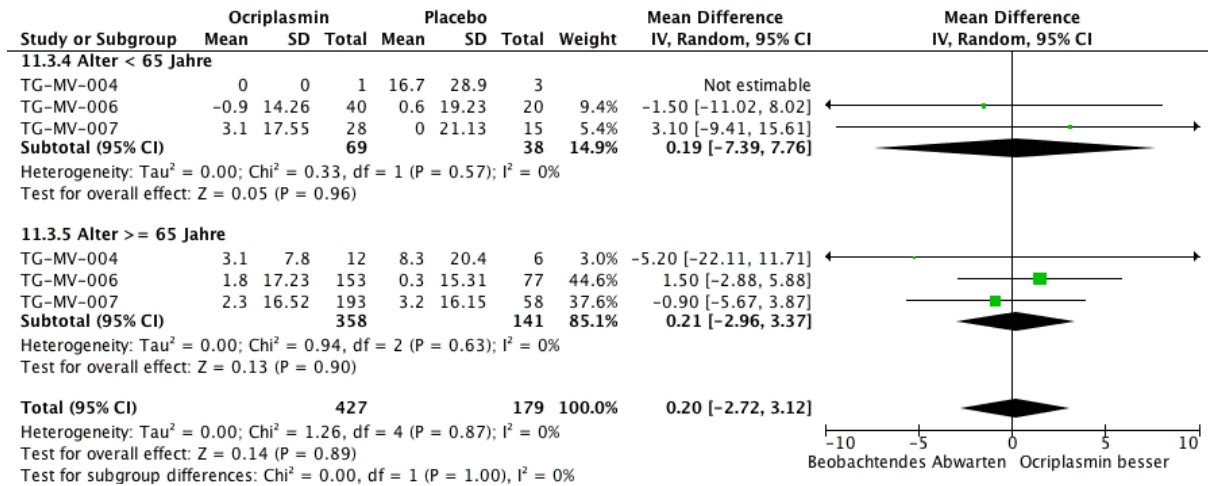
10.2 NEI VFQ Nahaktivitäten Alter



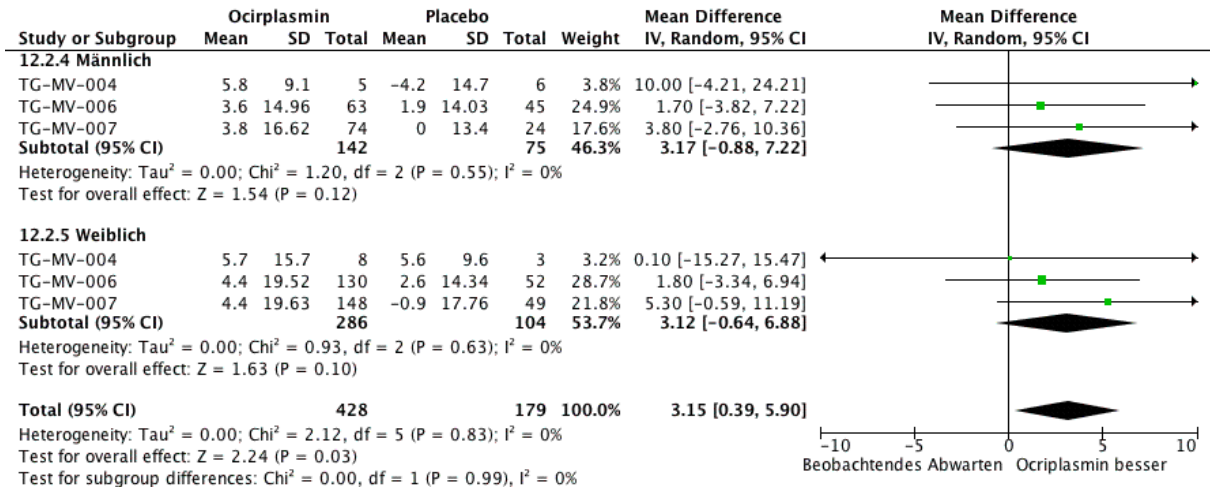
11.1 NEI VFQ Augenschmerzen Geschlecht



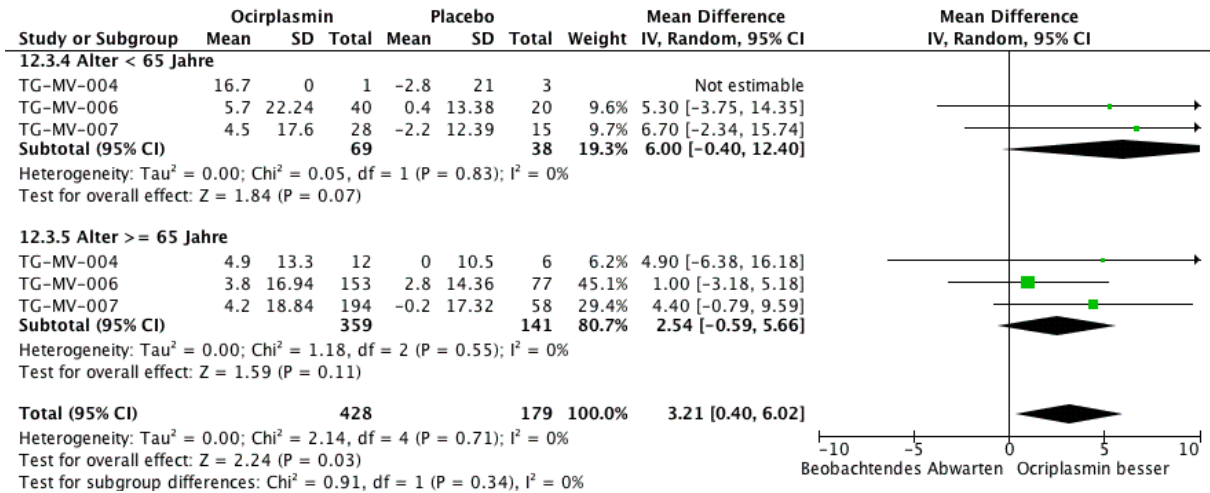
11.2 NEI VFQ Augenschmerzen Alter



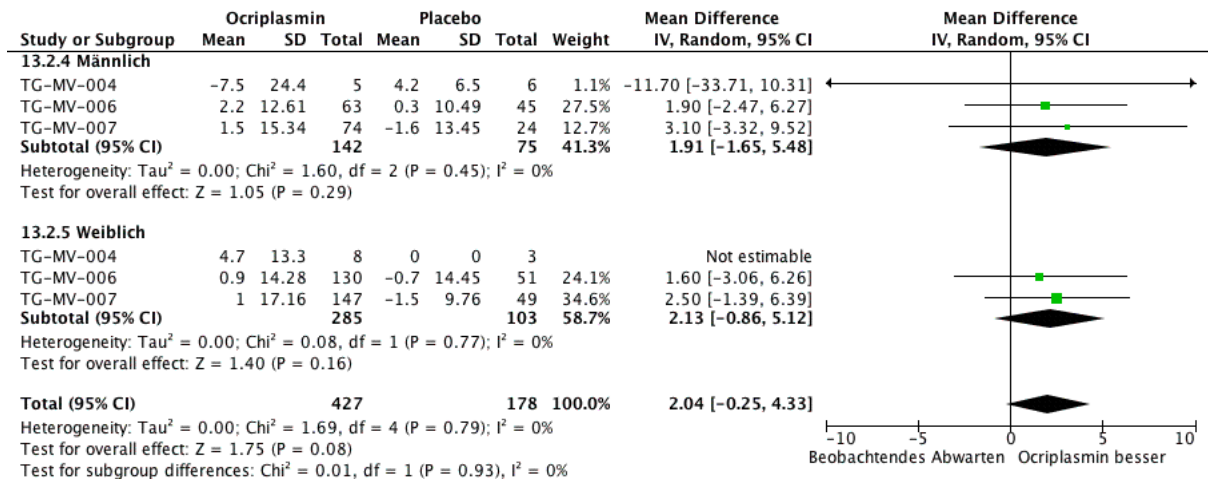
12.1 NEI VFQ Fernaktivitäten Geschlecht



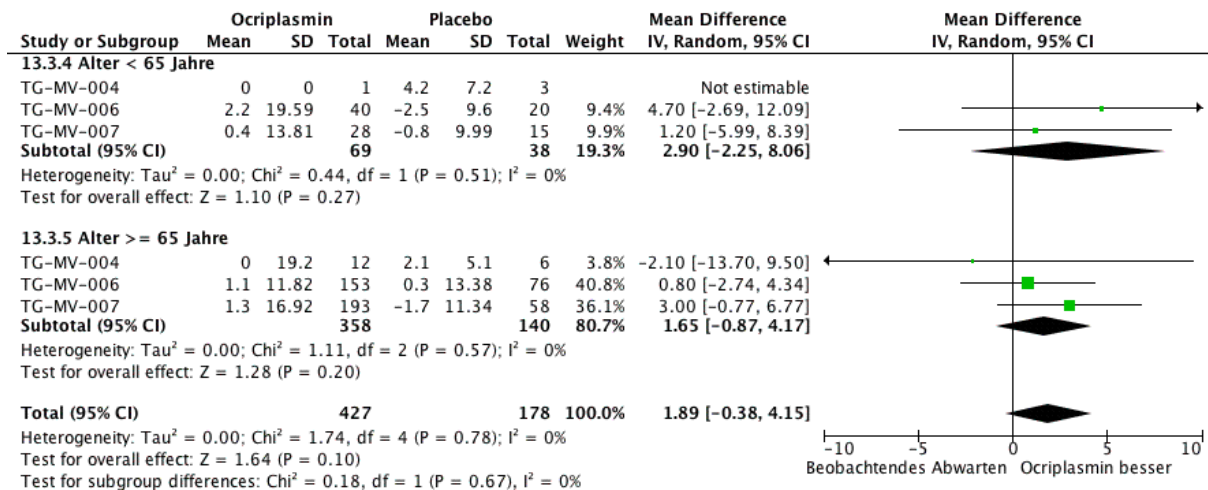
12.2 NEI VFQ Fernaktivitäten Alter



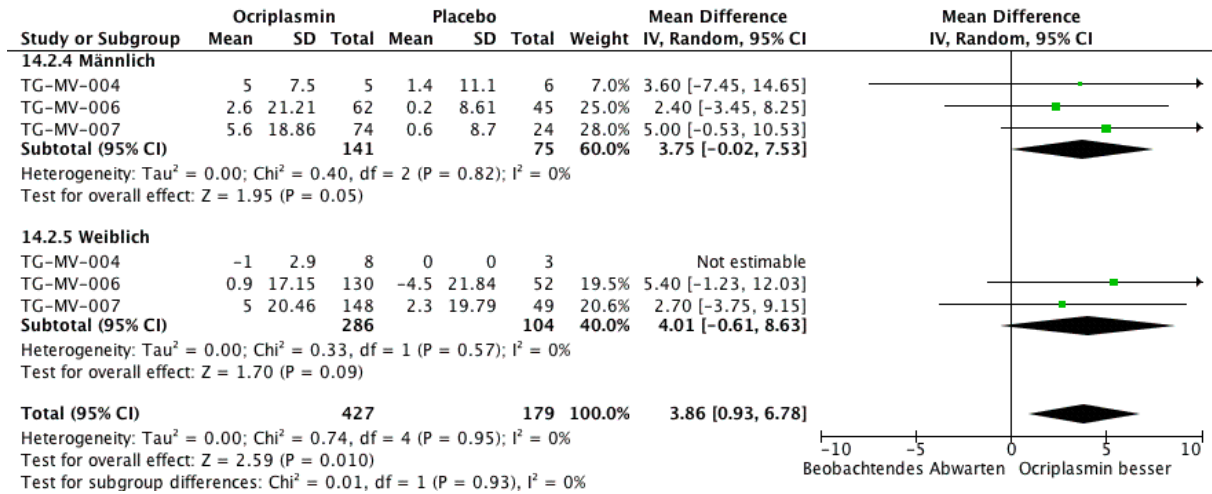
13.1 NEI VFQ Soziales Funktionieren Geschlecht



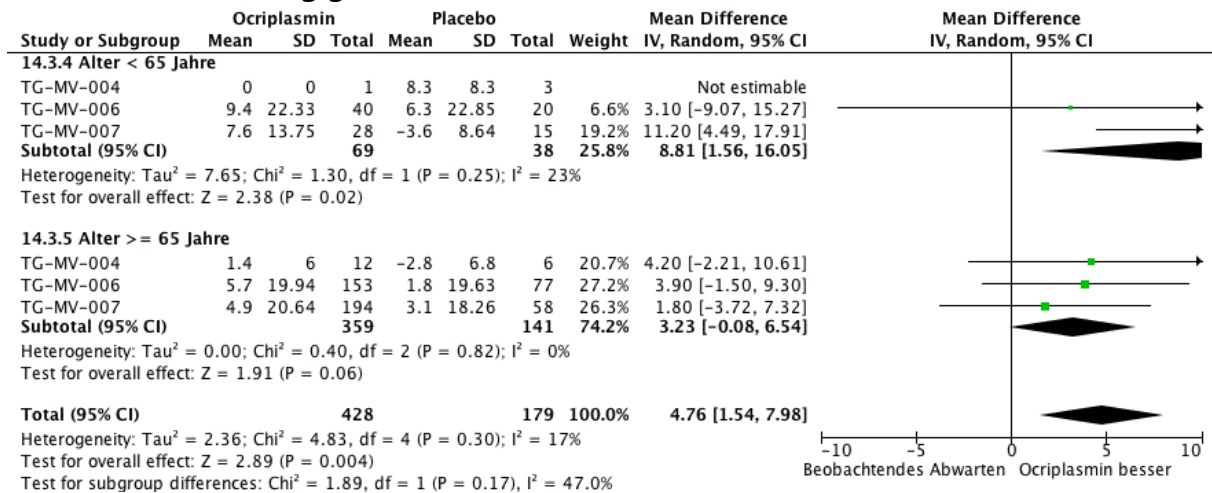
13.2 NEI VFQ Soziales Funktionieren Alter



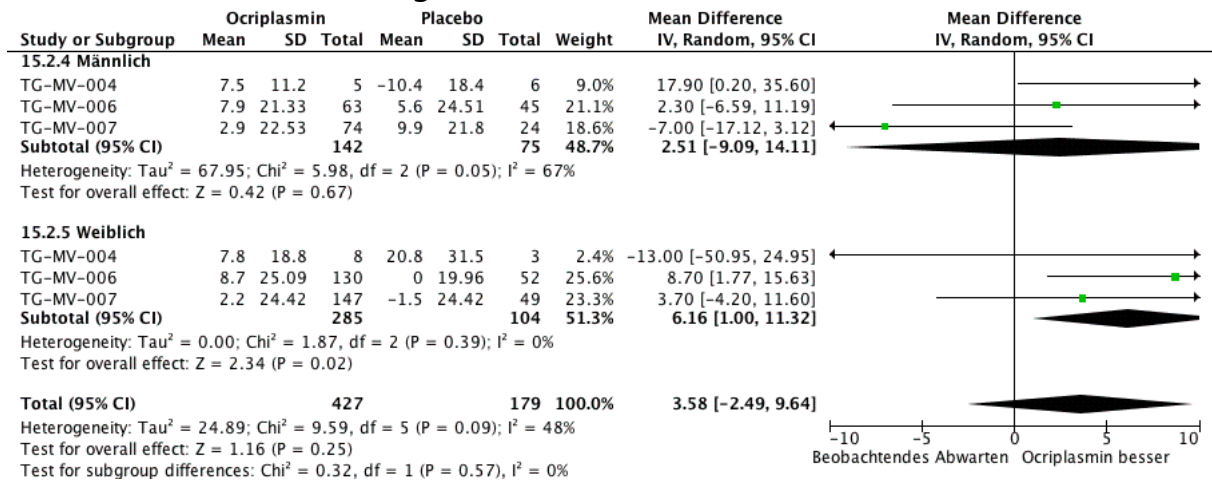
14.1 NEI VFQ Abhängigkeit von anderen Geschlecht



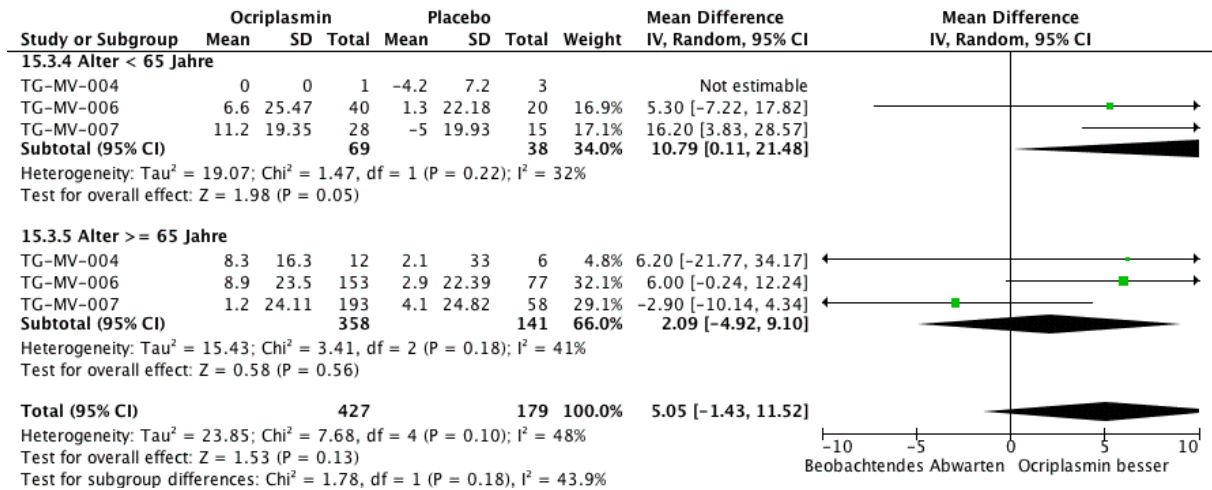
14.2 NEI VFQ Abhängigkeit von anderen Alter



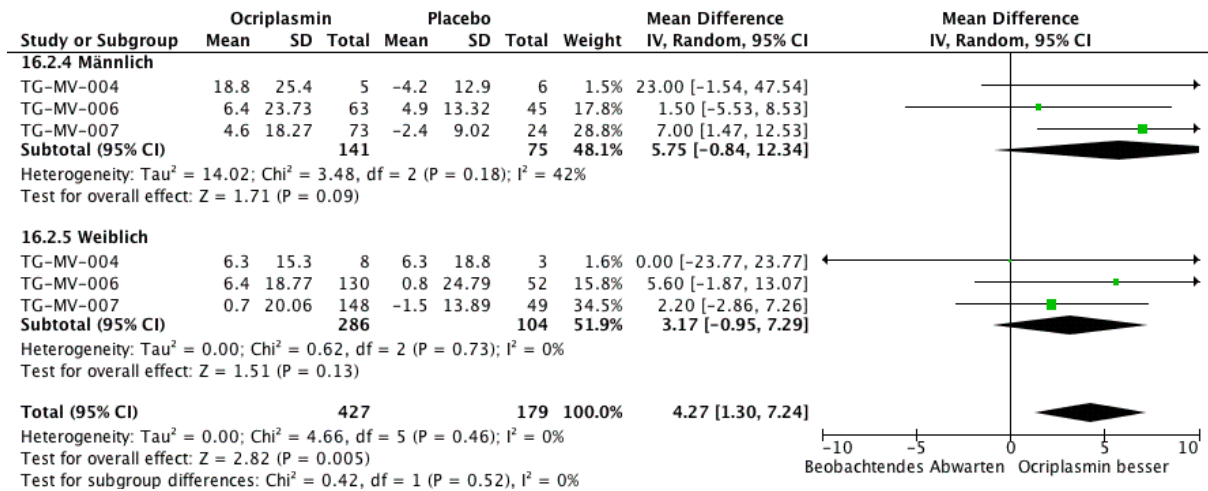
15.1 NEI VFQ Rollenschwierigkeiten Geschlecht



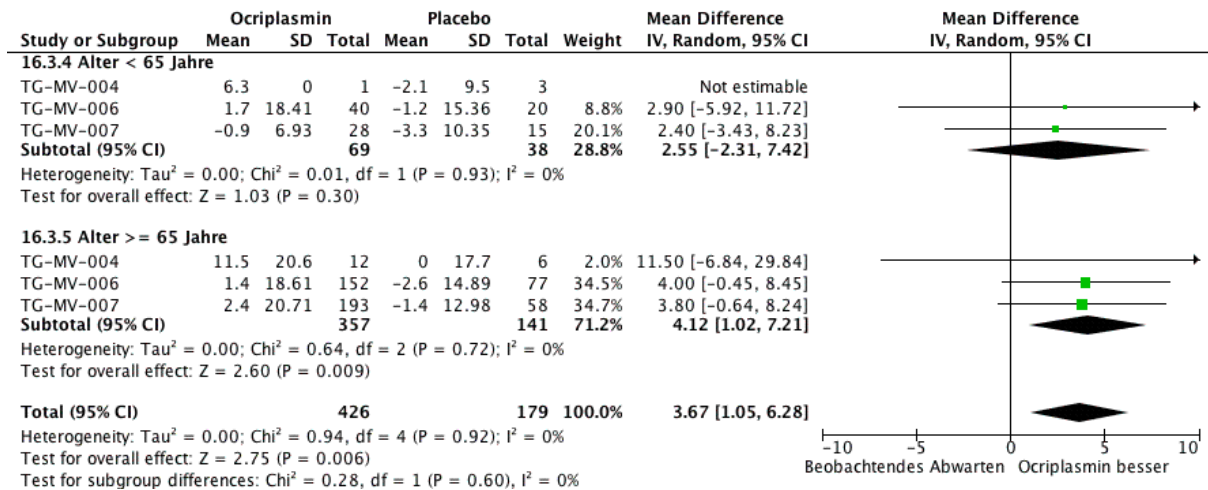
15.2 NEI VFQ Rollenschwierigkeiten Alter



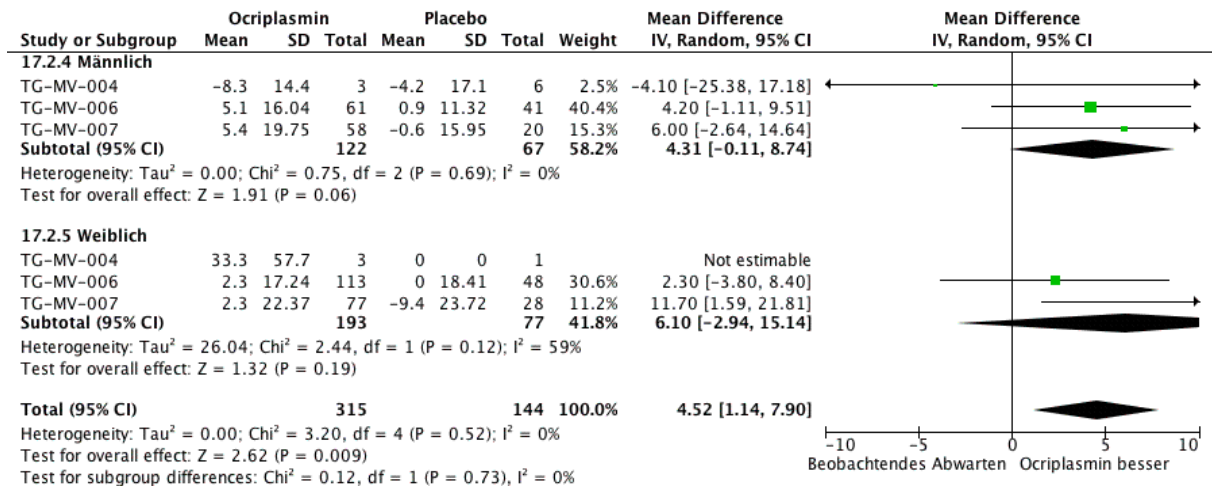
16.1 NEI VFQ Mentale Gesundheit Geschlecht



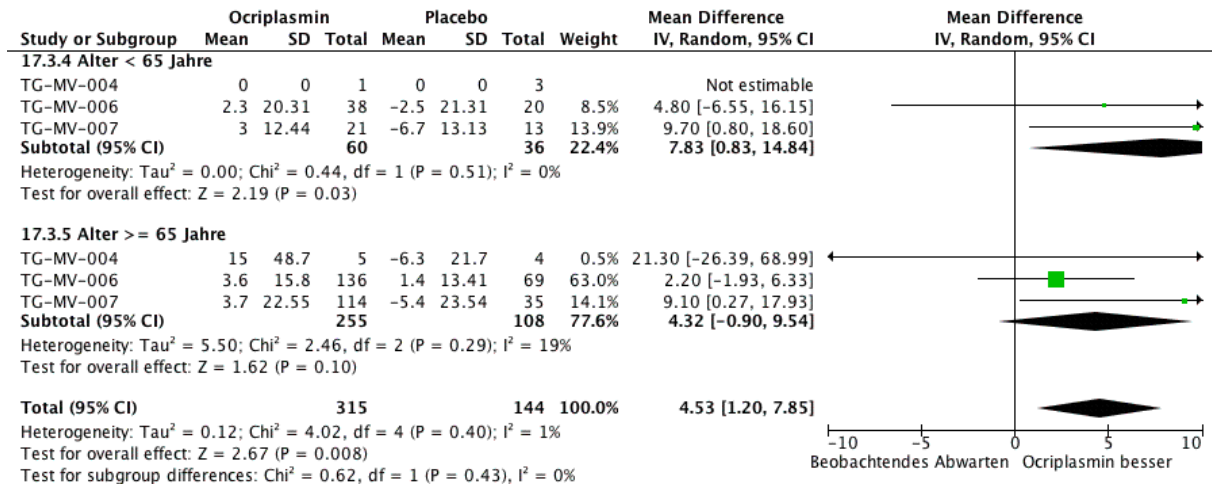
16.2 NEI VFQ Mentale Gesundheit Alter



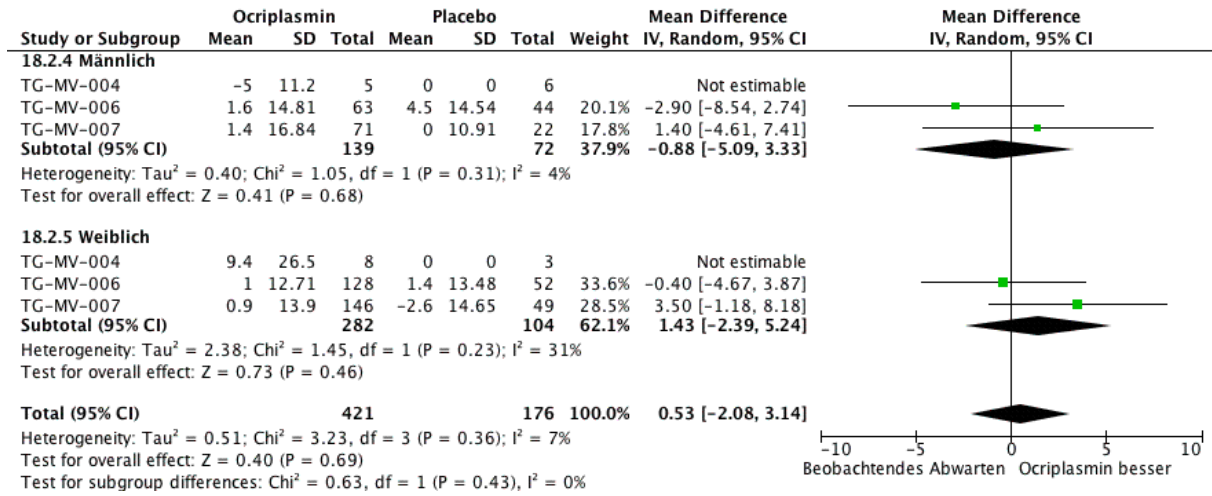
17.1 NEI VFQ Fahrverhalten Geschlecht



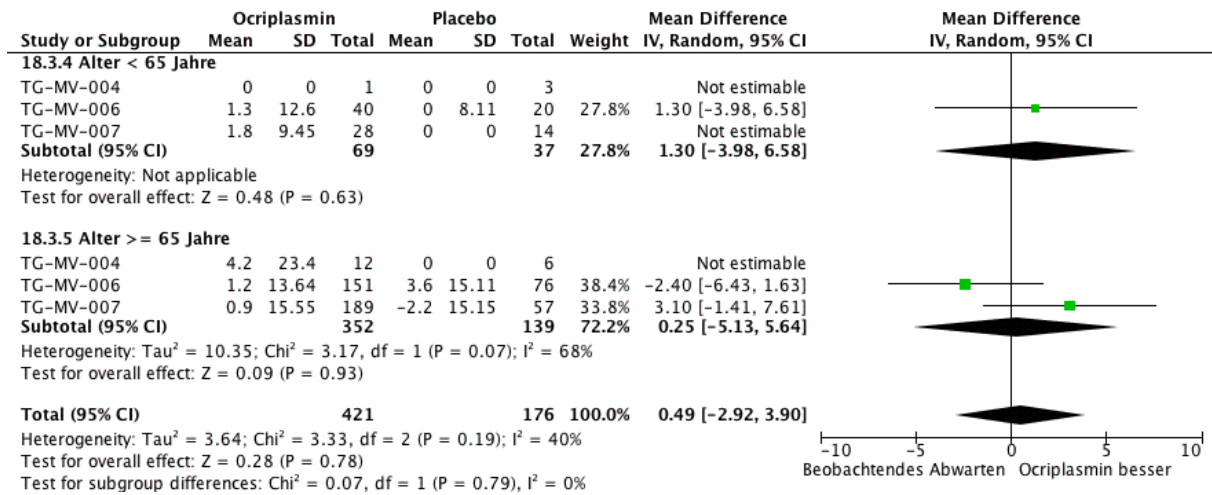
17.2 NEI VFQ Fahrverhalten Alter



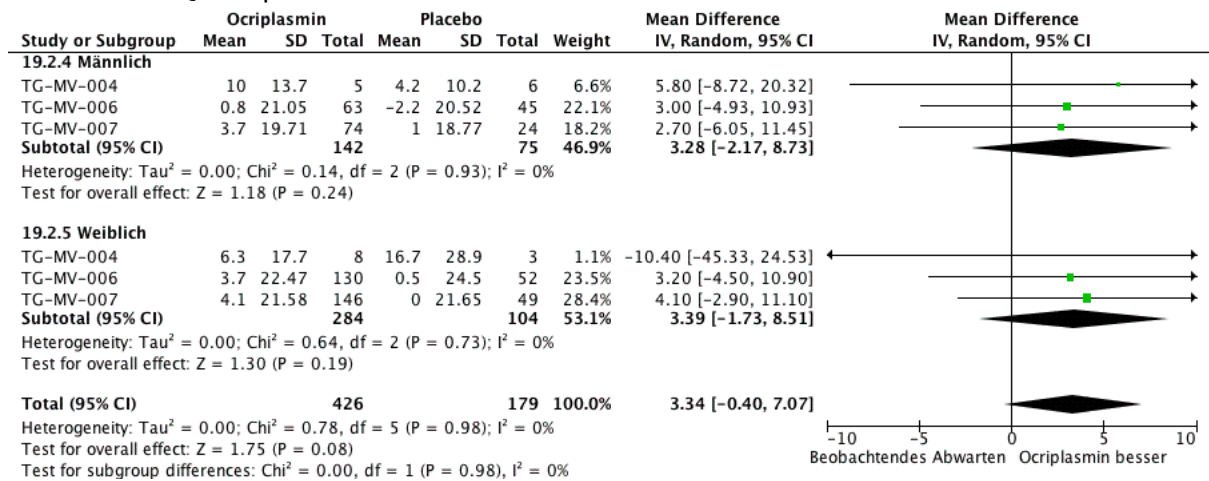
18.1 NEI VFQ Farbsehen Geschlecht



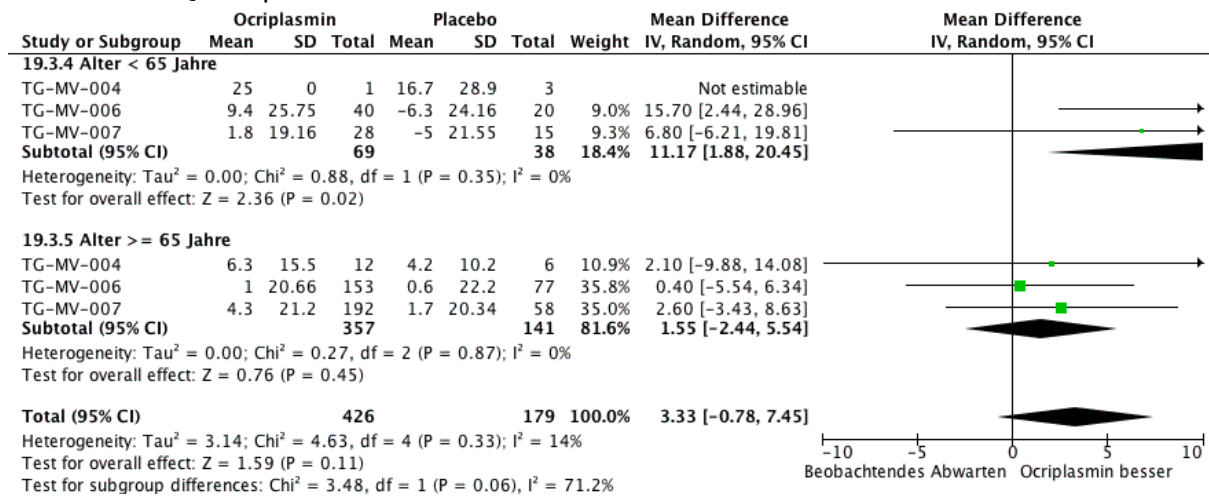
18.2 NEI VFQ Farbsehen Alter



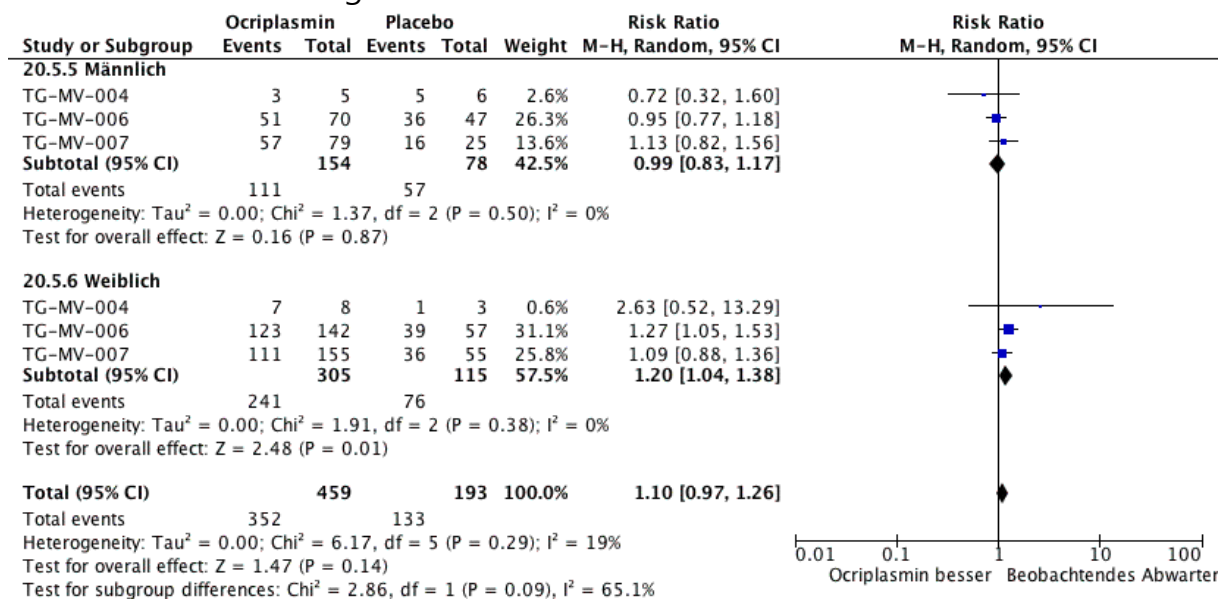
19.1 NEI VFQ Peripheres Sehen Geschlecht



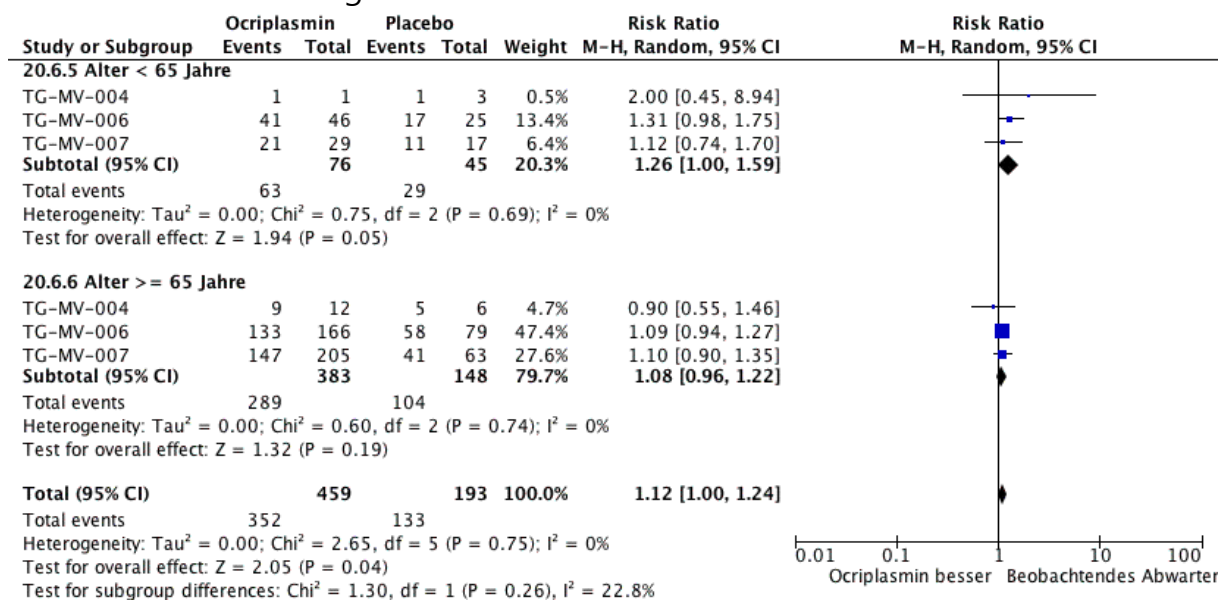
19.2 NEI VFQ Peripheres Sehen Alter



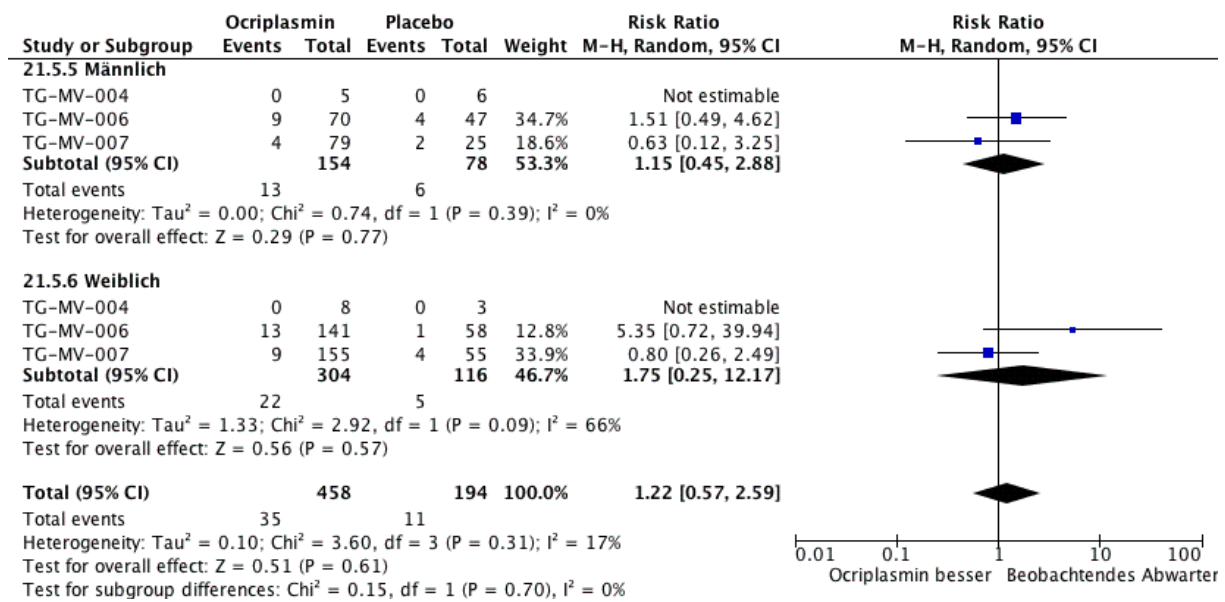
20.1 Unerwünschte Ereignisse Geschlecht



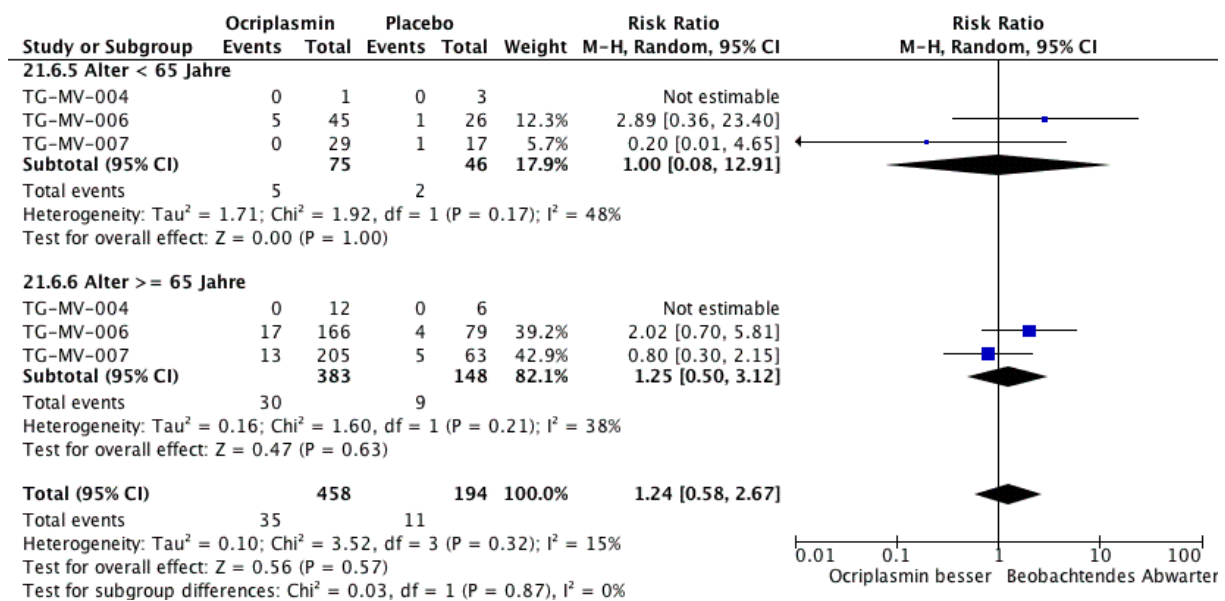
20.2 Unerwünschte Ereignisse Alter



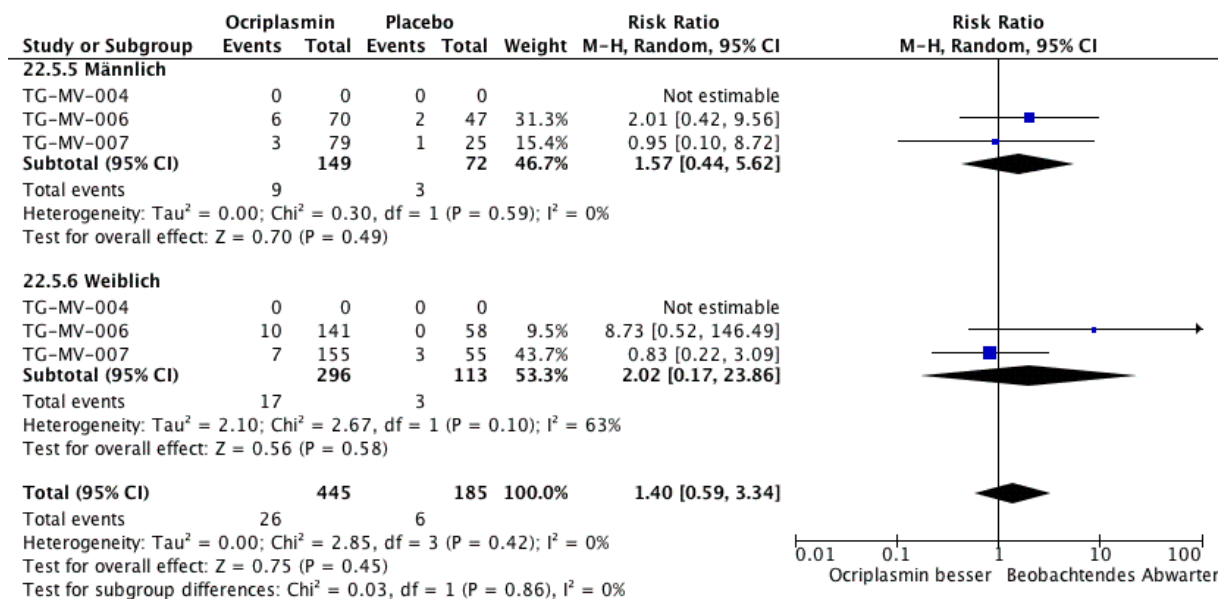
21.1 Sehschärfe Verlust 2 Zeilen Geschlecht



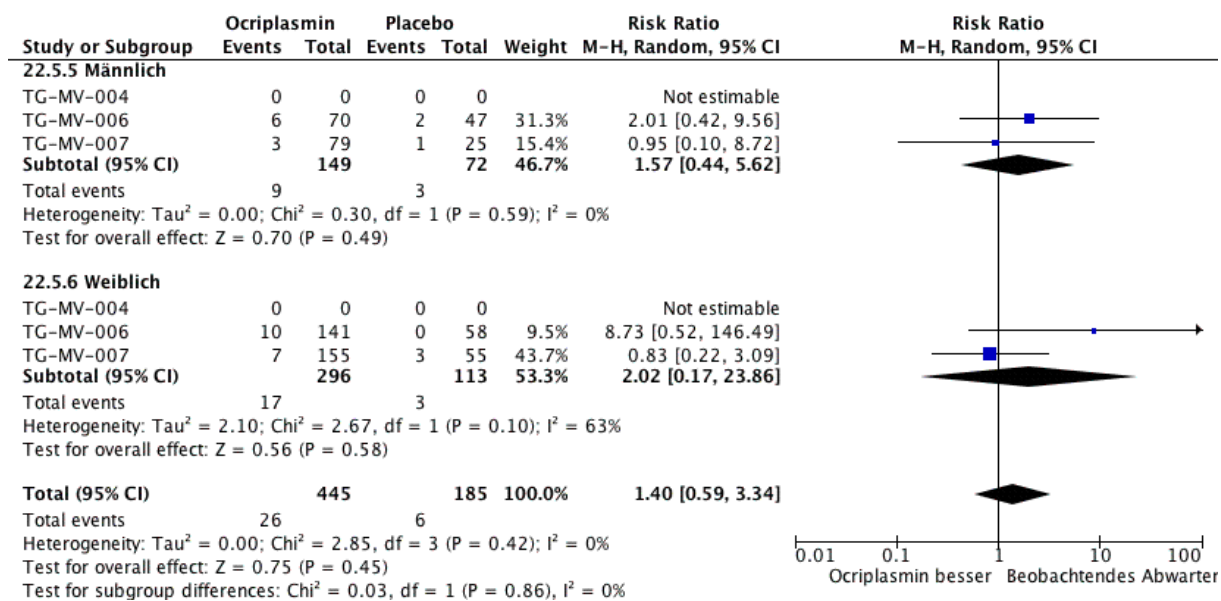
21.2 Sehschärfe Verlust 2 Zeilen Alter



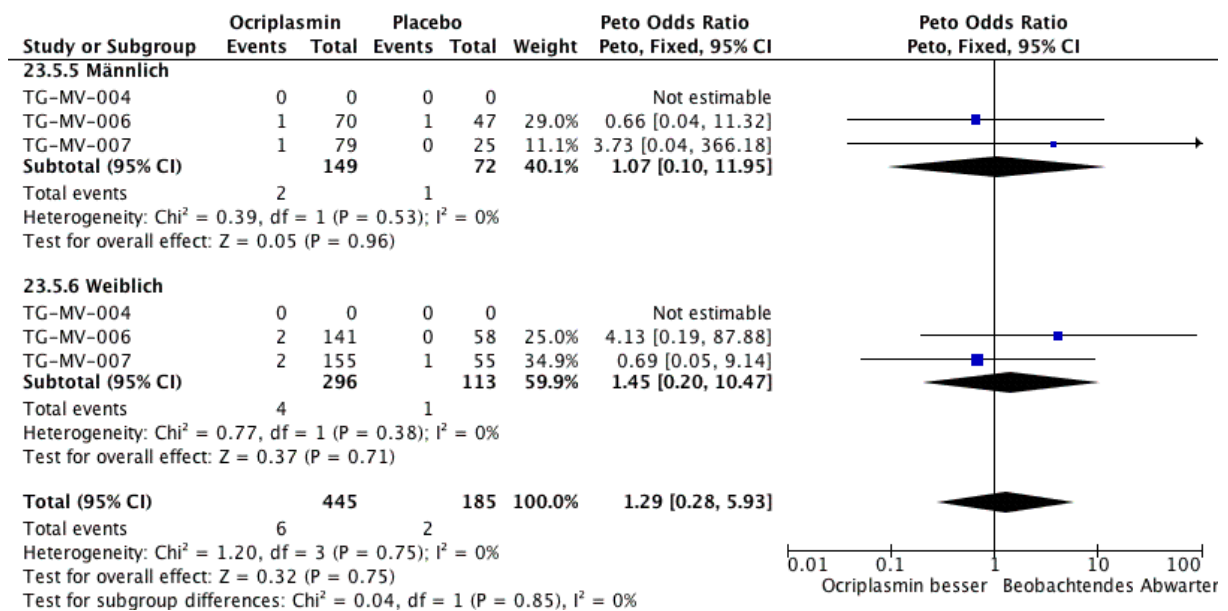
22.1 Sehschärfe Verlust 3 Zeilen Geschlecht



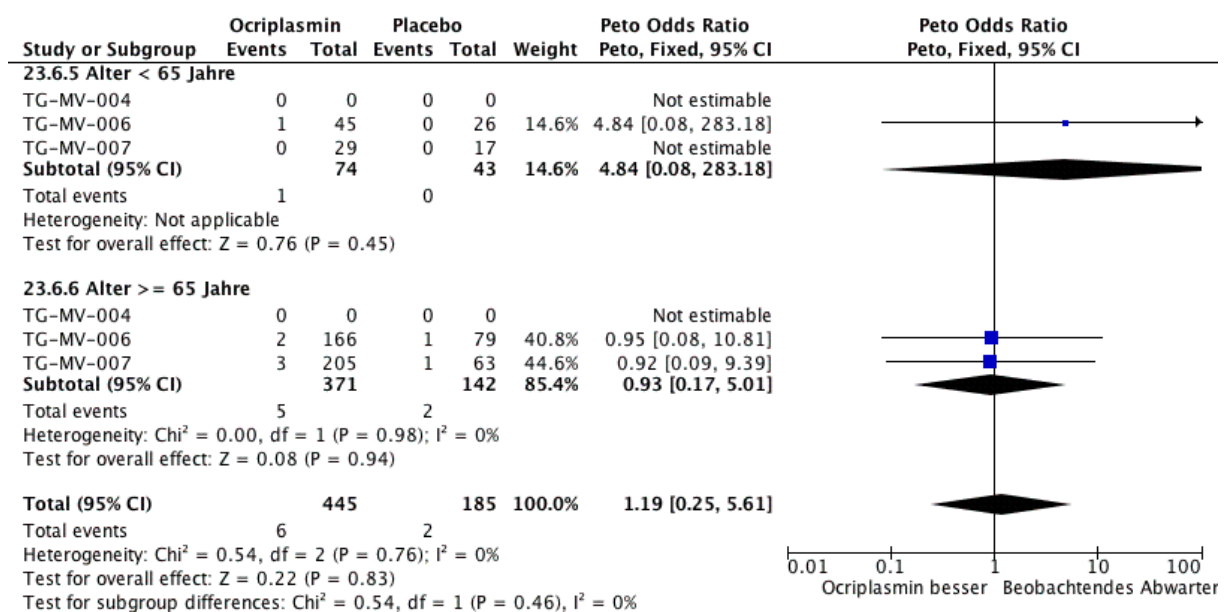
22.2 Sehschärfe Verlust 3 Zeilen Alter



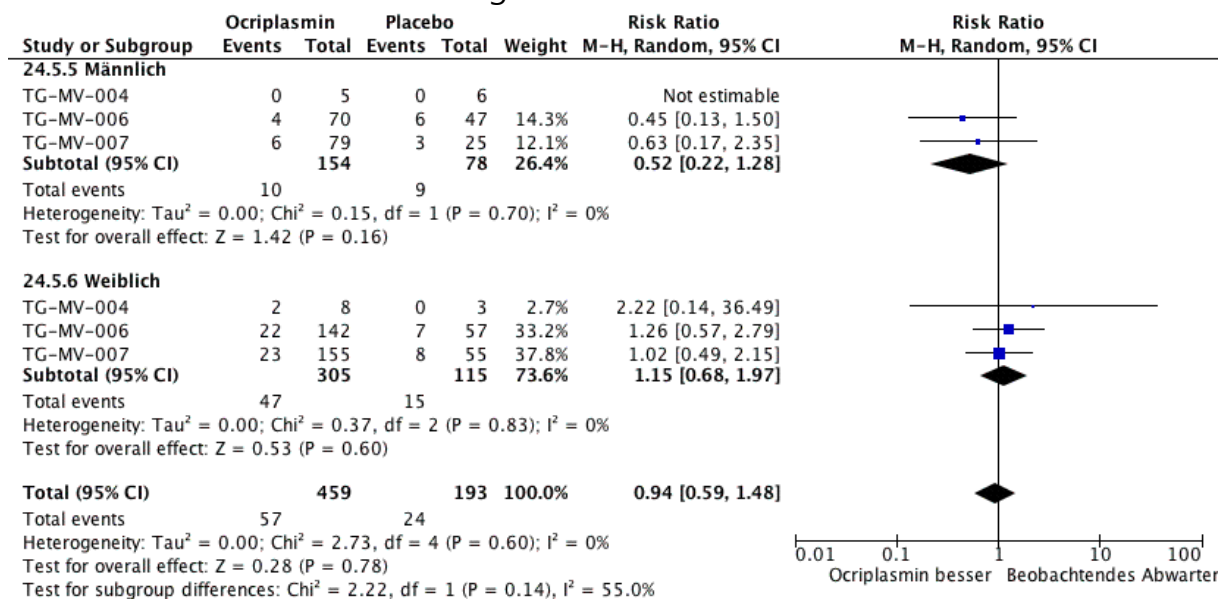
23.1 Sehschärfe Verlust 6 Zeilen Geschlecht



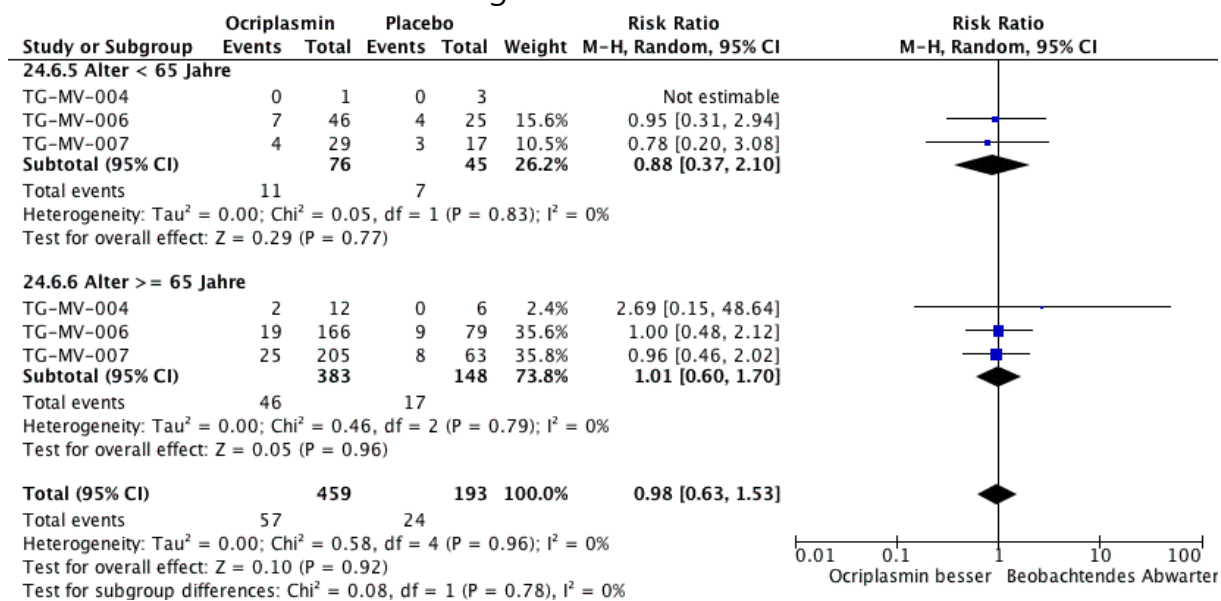
23.2 Sehschärfe Verlust 6 Zeilen Alter



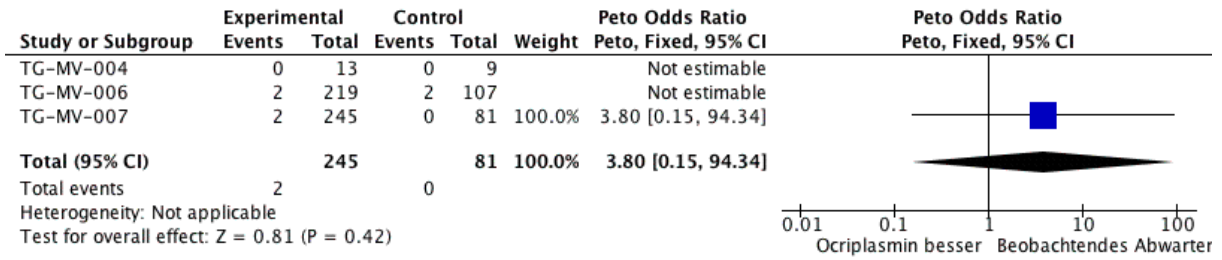
24.1 Schwerw. Unerwünschte Ereignisse Geschlecht



24.2 Schwerw. Unerwünschte Ereignisse Alter



25 Studienabbruch



26 Mortalität

